

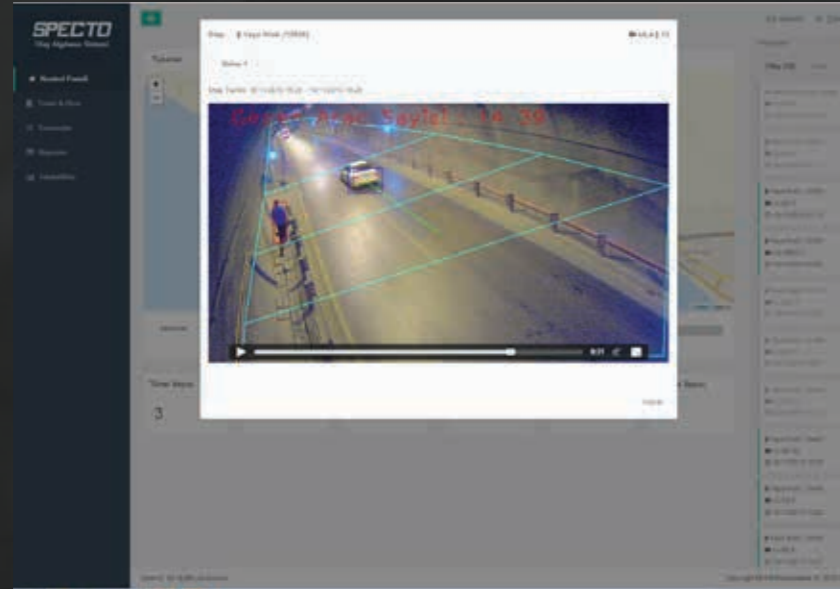


# **SPECTO**<sup>TM</sup>

Automated Tunnel  
Incident Detection  
System

## Control of all Cameras via Single Interfac

SPECTO™ is a vision based incident detection system that can be integrated to any analog or digital cameras available in tunnels. With its high power abilities, SPECTO™ is able to control different brand of cameras into a single interface. In that interaface operators could monitor whole cameras and able to observe detected events 24/7.



## SPECTO™ Technical Specifications

Event detection with 95% accuracy rate

False alarm rate below 2%

Real time processing and analysis of videos taken by tunnel cameras.

Real time audible transmission of detected event information with visual warnings

Management of more than one camera view from a single platform

All event detected videos and defining metadata is kept in a database.

# SPECTO™

## Automated Tunnel Incident Detection System

SPECTO™ is a vision based automatic incident detection system that reduces the reaction time by informing the operator in abnormal cases likely to occur in the tunnels.

## SPECTO™ Analysis



Stopped Vehicle Detection



The number of passing cars



Detection of Vehicles Driving Speedy / Slowly



Anlık yoğunluk bilgisi



Pedestrian Detection



Smoke Detection



Instant Density Information



Detection of Suspicious Package on the way



ISSD BİLİŞİM ELEKTRONİK EĞİTİM SANAYİ VE TİCARET LTD. ŞTİ.  
ODTÜ TEKNOKENT İKİZLER BLOK NO:ZK 5-6 ÇANKAYA/ANKARA  
0312 210 00 15 - 0312 210 10 75

[www.issd.com.tr](http://www.issd.com.tr)