



VIEROTM

Vehicle Counting
System

The easiest way to
Collect traffic data...



VIERO™

Araç Sayım Sistemi

VIERO™ Vehicle Counting System, is capable of counting vehicles passing through any road section in any weather condition. System also has wired / wireless data transfer to remote centers.

VIERO™ produces the average speed information of the vehicles by measuring the instant vehicle density. VIERO™, working in two different modes for day and night with image processing algorithms developed by us which has less than 5% error margin.

Located in the IP66 standard enclosure, VIERO™ consists of a digital camera, a high performance image processing board and a wireless communication module.

Due to the specially developed algorithms for the processors, VIERO™ has a higher performance than the similar systems.



Easiest Way to Collect Traffic Data

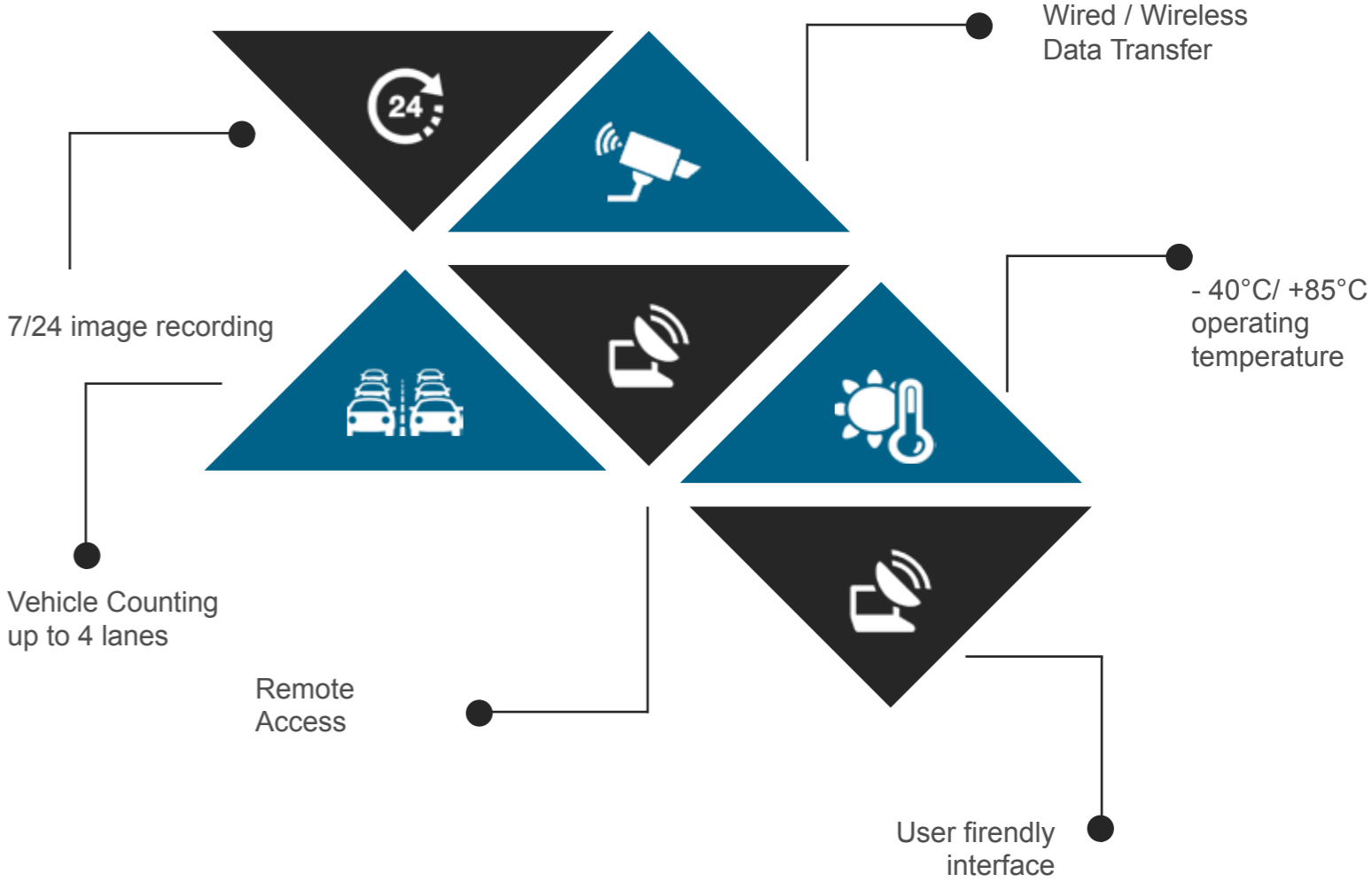
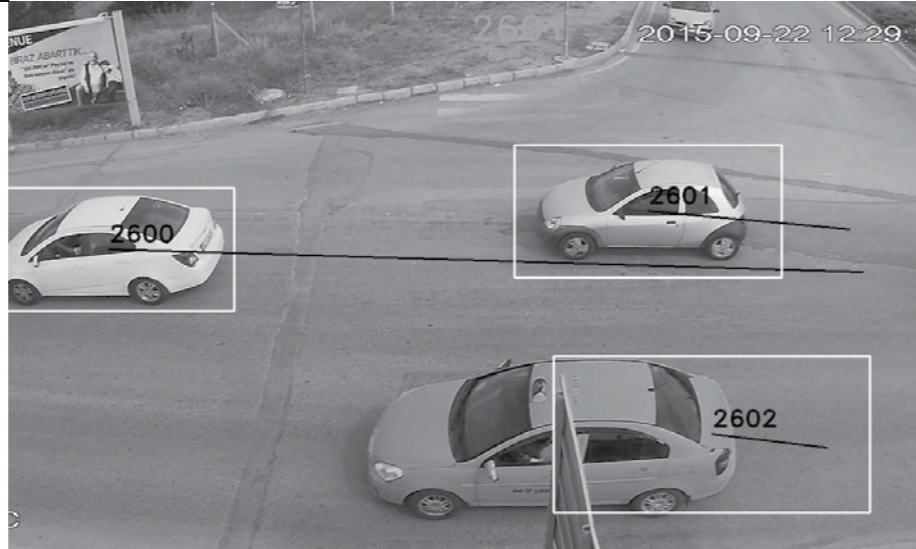
VIERO™ Analysis

- Vehicle Counting
- Vehicle Density Calculation
- Image Based Vehicle Tracking
- Average Vehicle Speed Calculation

VIERO™, produces various traffic data by measuring the vehicle count, density and average vehicle speed with image based vehicle tracking. Those traffic data mainly used by Dynamic Junction Control System Chaos™ and the other areas like Signal Time Optimizations, Traffic Feasibility Studies, Road Safety Studies and so on.

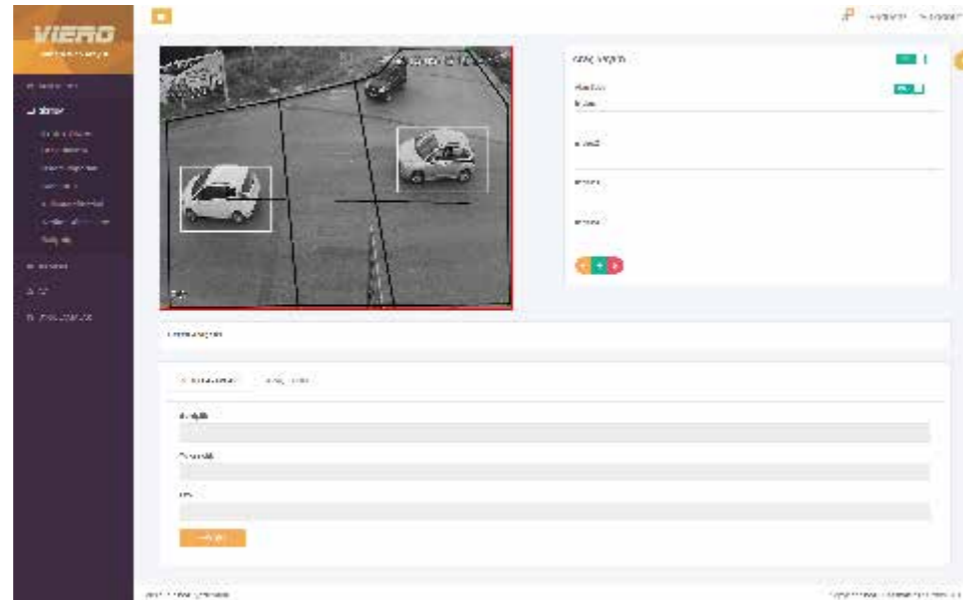
VIERO™ Advantages

- 100 meters field of view
- Car counting up to 4 lanes
- 7/24 high performance
- Free update during warranty
- Wired / wireless data transfer to remote centers



User friendly interface

VIERO™ is capable of counting vehicles passing through any road section in any weather condition



Real-time Vehicle Count



VIERO™, produces real-time vehicle counts with providing traffic intensity and average vehicle speed data. These generated data are shared with the operators instantly through the VIERO™ user interface.

General

| | |
|-------------------------|-----------------------------|
| Lane Width | Counting up to 4 lanes |
| Detection Distance | 100 m |
| Day / Night Performance | 7/24 high performance |
| Data Transfer | GSM, Ethernet, Wi-Fi |
| Software Update | Free update during warranty |



Hardware Specification

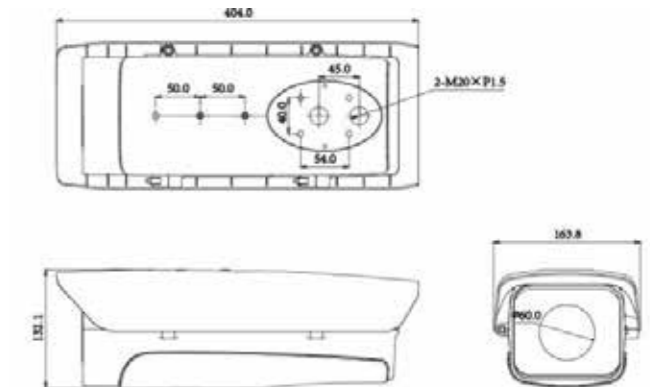
| | |
|----------------|--|
| Processor | x86_64 dual/quad core processor |
| Side Unit | Embedded 2 GB RAM, / RS232, CANBUS, USB ve dijital I/O units |
| HDD | Minimum 8 GB |
| Camera | 2 MP 30FPS IP Camera |
| Lighting | External IR |
| Other Features | Dahili GSM module |
| Power | 15W (with external IR, 30W) |

Other Specification

| | |
|-----------------------|-------------------------|
| Housing | IP 66 / IK 10 / NEMA 4X |
| Operating Temperature | -40°C / + 85°C |
| MTBF | 52 Kh |
| Weight | 3,6 kg |

Housing Specification

| | |
|--------------------|--|
| Material | Aluminum & PC |
| Housing Outer Size | 404mm(L) x 164mm(W) x 132mm(H) |
| Housing Inner Size | 255mm(L) x 90mm(W) x 70.5mm(H) 215mm(L) x 90mm(W) x 83mm(H) |





ISSD BİLİŞİM ELEKTRONİK EĞİTİM SANAYİ VE TİCARET LTD. ŞTİ.
ODTÜ TEKNOKENT İKİZLER BLOK NO:ZK 5-6 ÇANKAYA/ANKARA
0312 210 00 15 - 0312 210 10 75

www.issd.com.tr